

SOUTHERN

ST.

ST.

S. Highland

46

MINOR

SPOTTSWOOD

54,339

\$287,895

\$250k

Proposed McDonald's

\$400,000

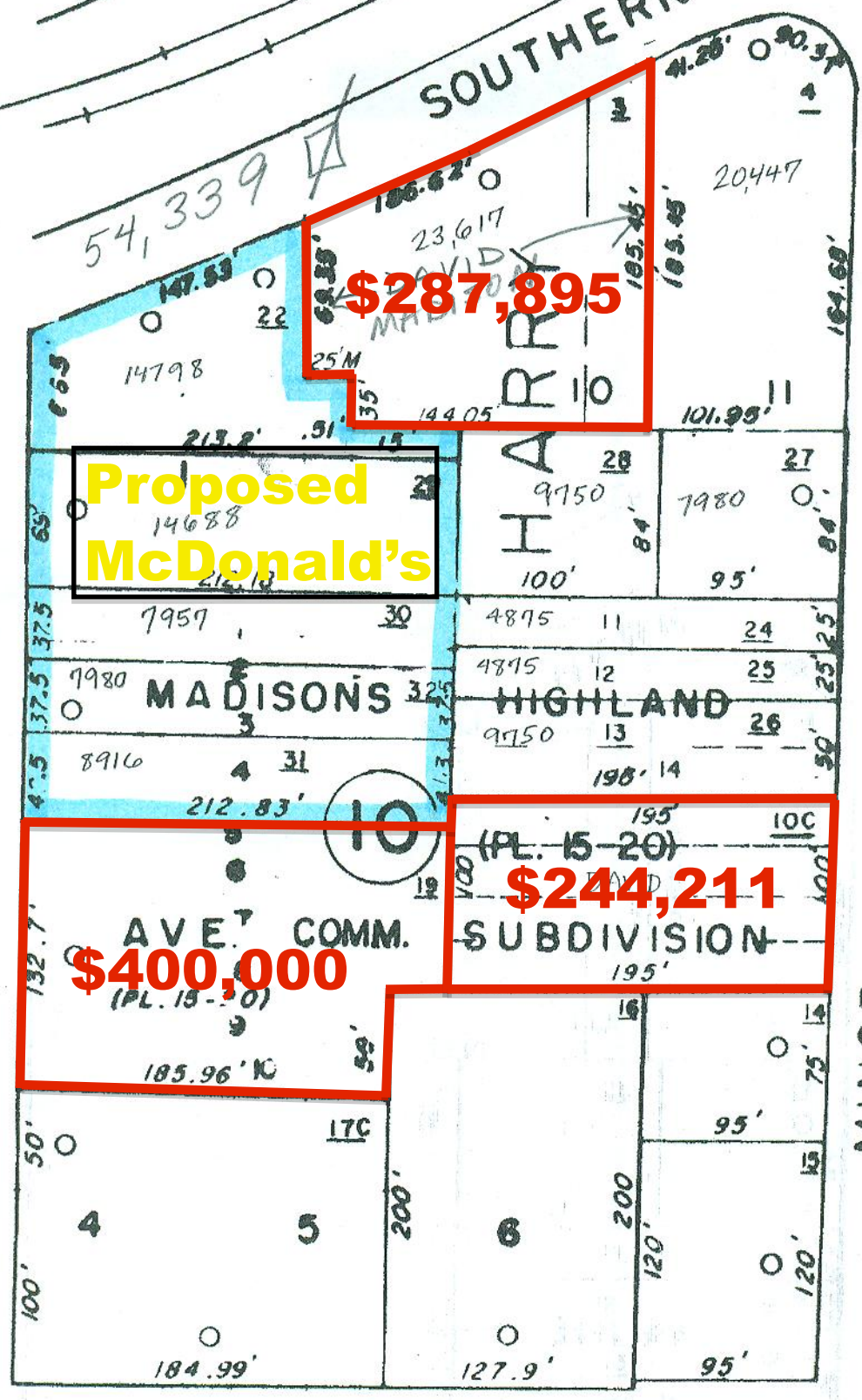
\$244,211

MADISON'S

HIGHLAND

AVE. COMM.

SUBDIVISION



147.83

14798

14688

7959

7980

8916

132.7'

50'

100'

184.99'

23,617

186.62'

25'M

213.2'

7959

7980

8916

185.96'

17C

200'

127.9'

4.28'

90.37'

20447

105.45'

101.99'

4875

4875

9750

195'

95'

120'

95'

248.24'

271.51'

50'

200'

50'

50'

50'

95'

60'

95'

100'

140'

150'

